

GUIDE TO PRESIDENTIAL PRIMARIES



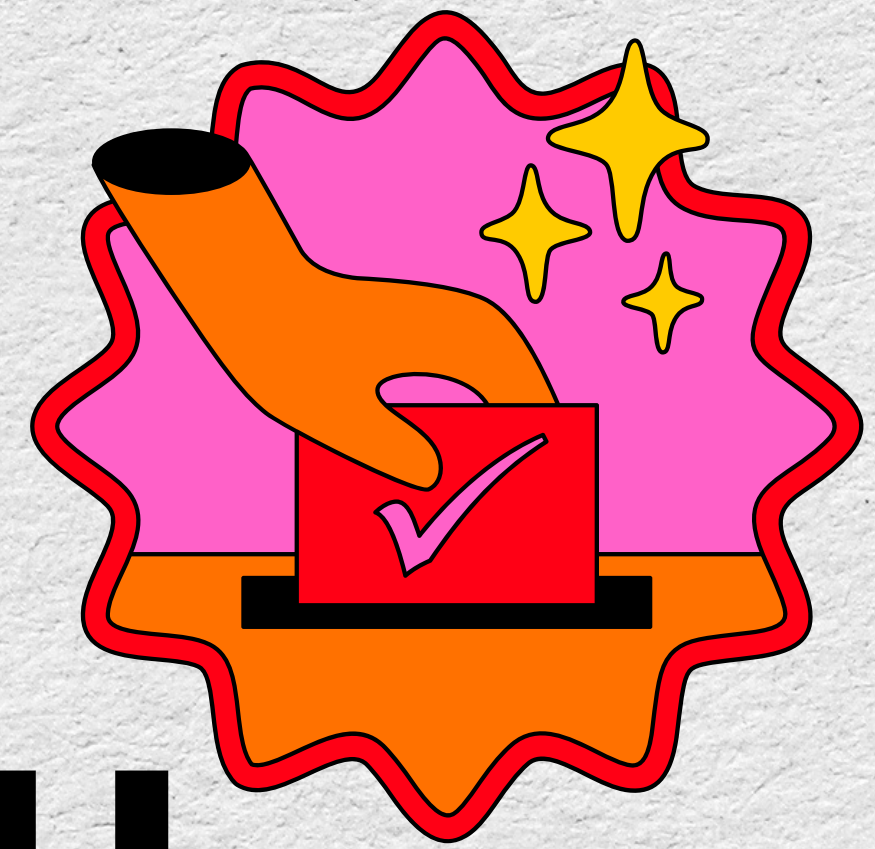
PRESENTED BY

ASIAN AMERICAN
ORGANIZING PROJECT

WHAT IS A PRIMARY?

An election to select candidates, usually for a particular political party, to appear on the general election ballot.

- You'll choose one of the major political parties in MN and then vote for one of the candidates that's running to win that party's nomination for president in November
- Candidates must reach a certain number of delegates to win the nomination and appear on the ballot
- Candidates that reach that certain number of delegates will attend their respective political parties' national conventions in the summer to vote on which candidate will become their party's nominee for president in November



WHEN WILL THE NEXT PRESIDENTIAL PRIMARY TAKE PLACE... WHEN CAN I VOTE?

Tuesday, March 5, 2024

Polls will be open from 7AM* - 8PM (*be sure to double check your polling location hours as they may vary depending on location).



WHO CAN VOTE IN THE PRIMARY?

Anyone who is registered to vote in MN.

- If you have yet to register, or if you moved since you last voted, you can register at your polling place the day of the primary election
 - You just need to bring an approved **(1)** photo ID (passport, driver's license, tribal ID, learner's permit) **AND (2)** a document with your name and current address (utility bill, lease, student fee statement)

*****Note that voters must turn 18 years old by March 5 to vote in the presidential primary.***



WHERE CAN I VOTE?

- Your polling place is based on your home address.
- You can find your polling location by searching for “MN polling place locator” and visiting the link by Minnesota Secretary of State.
- You will also be able to see:
 - Election day voting hours (for your location)
 - Maps to your polling place
 - Ballot drop box locations
 - List of candidates



YOUR VOTING RIGHTS

- You can request assistance from an interpreter
 - If you need help navigating the voting process in a language other than English, you can request assistance on-site
 - If there is not a qualified interpreter, the election judge on-site can call an interpreter to assist you over the phone
 - Ballot materials may also be available in languages other than English
- Bring your children to the polls with you
- Request time off work to vote
- If you have questions while voting, you can ask the election judge at your polling place



WILL ALL PARTIES PARTICIPATE IN THE PRESIDENTIAL PRIMARY?

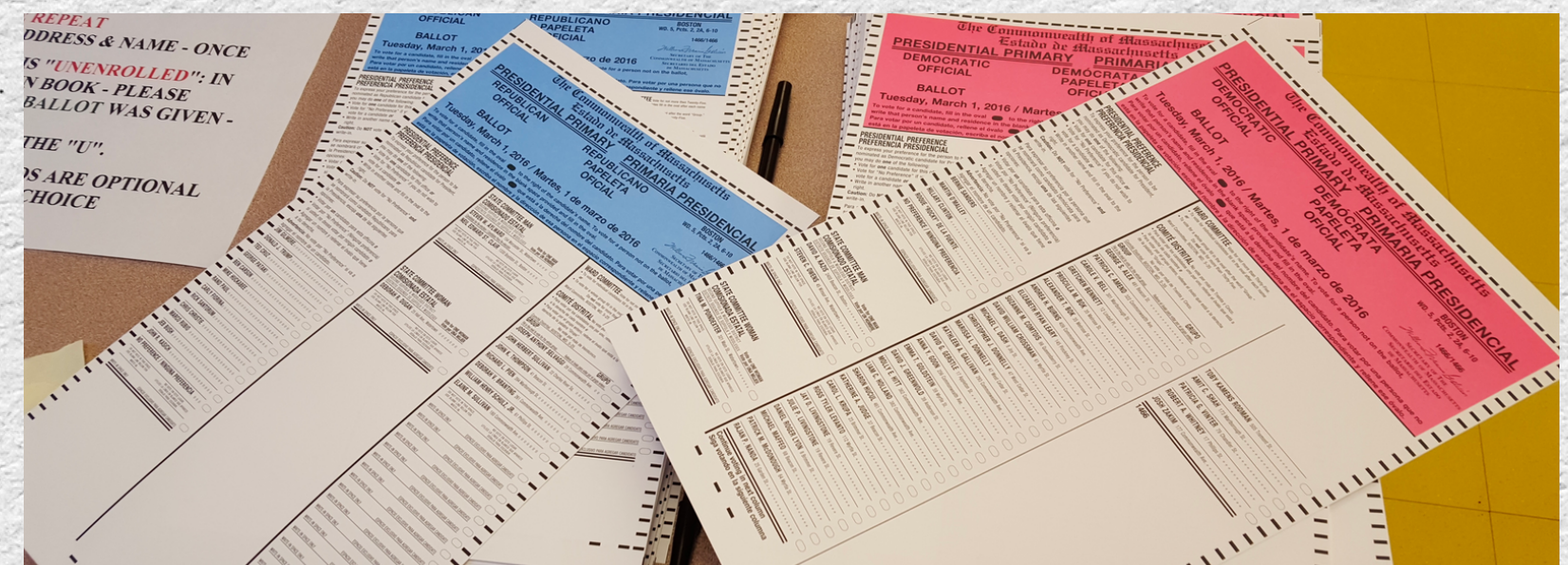
No, only major parties.

(1. Democratic-Farmer-Labor Party 2. Legal Marijuana Now Party 3. Republican Party of Minnesota in MN)

WILL ALL PARTIES BE ON THE SAME BALLOT?

No, each participating major party will have a separate ballot.

- Each voter will be asked to request a ballot from the party of their choice (Sahan Journal).
- You can only vote in one party's presidential primary contest (Sahan Journal).



***NOTE these are not the actual ballots.*

WHAT TYPE OF ELECTION DOES MN HAVE FOR PRESIDENTIAL PRIMARIES?

MN has open primaries.

- This means that MN does not ask voters to choose parties on the voter registration form
 - **HOWEVER**, voters will choose which party's ballot to vote, but this decision is private and *does not register the voter with that party.

****This permits voters to cast a vote across party lines in a primary election.***

[re]SOURCES

Office of the MN Secretary of State - Presidential Primary

Abe Asher (*Sahan Journal*) - Here's What You Need to Know About Voting in Minnesota's Presidential Primary Election

Maggie Astor (*NYT*) - What to Know About Super Tuesday

Office of the MN Secretary of State - Political Parties

Office of the MN Secretary of State - Voting Hours

National Conference of State Legislatures (*NCSL*) - State Primary Election Types